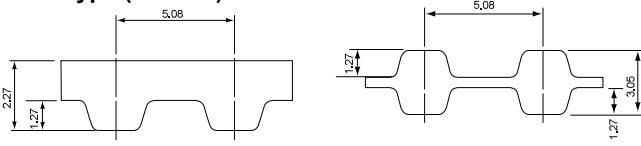
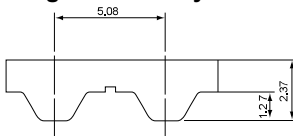


Classical Type (D)XL

GB Type (Rubber)



U Type (Polyurethane) *Single-sided only



● Product Code

nominal width
(inch) x 100 = 0.37 inch (9.5 mm)

160

(D)XL

037

GB·(U)

nominal length
(inch) x 10 = 16 inch (406.40 mm)

Tooth Profile
(DXL for Double timing belt)

GB Type (rubber) U Type (polyurethane)

Belt width lineup Table 1-6

Belt weight per unit (kg/10mm x 1m) Table 1-7

Nominal width	Width (mm)	Material	Tooth Profile	Belt weight
025	6.4	rubber	XL	0.022
031	7.9		DXL	0.022
037	9.5		XL	0.020
050	12.7	polyurethane	XL	

Standard belt size table

Nominal length	Number of teeth	Pitch length(mm)	Manufacturable Size	
			GB	U
60 XL	30	152.40	S	S
64 XL	32	162.56	S	S
66 XL	33	167.64		S
68 XL	34	172.72	S	
70 XL	35	177.80	S	S
74 XL	37	187.96	S	
76 XL	38	193.04	S	S
78 XL	39	198.12	S	S
80 XL	40	203.20	S	S
82 XL	41	208.28	S	
84 XL	42	213.36	S	S
86 XL	43	218.44	S	
88 XL	44	223.52	S	
90 XL	45	228.60	S	S
92 XL	46	233.68	S	
94 XL	47	238.76	S	S
96 XL	48	243.84	S	
98 XL	49	248.92	S	
100 XL	50	254.00	S	S
102 XL	51	259.08	S	S
104 XL	52	264.16	S	S
106 XL	53	269.24	S	S
108 XL	54	274.32	S	S
110 XL	55	279.40	S	S
112 XL	56	284.48	S	
114 XL	57	289.56	S	S
116 XL	58	294.64	S	S
118 XL	59	299.72	S	
120 XL	60	304.80	S	S
122 XL	61	309.88	S	
124 XL	62	314.96	S	S
126 XL	63	320.04	S	S
128 XL	64	325.12	S	S
130 XL	65	330.20	S	S
134 XL	67	340.36	S	
136 XL	68	345.44	S	S
138 XL	69	350.52	S	
140 XL	70	355.60	S	S
142 XL	71	360.68	S	S
144 XL	72	365.76	S	
146 XL	73	370.84	S	S
148 XL	74	375.92	S	S
150 XL	75	381.00	S · D	S
152 XL	76	386.08	S · D	S
154 XL	77	391.16	S · D	S
156 XL	78	396.24	S · D	
158 XL	79	401.32	S · D	S
160 XL	80	406.40	S · D	S
162 XL	81	411.48	S · D	
164 XL	82	416.56	S · D	

Table 1-8

Nominal length	Number of teeth	Pitch length(mm)	Manufacturable Size	
			GB	U
166 XL	83	421.64	S · D	S
168 XL	84	426.72	S · D	S
170 XL	85	431.80	S · D	S
172 XL	86	436.88	S · D	
174 XL	87	441.96	S · D	
176 XL	88	447.04	S · D	S
178 XL	89	452.12	S · D	
180 XL	90	457.20	S · D	S
182 XL	91	462.28	S · D	
184 XL	92	467.36	S · D	
186 XL	93	472.44	S · D	S
188 XL	94	477.52	S · D	
190 XL	95	482.60	S · D	S
192 XL	96	487.68	S · D	
194 XL	97	492.76	S · D	
196 XL	98	497.84	S · D	
198 XL	99	502.92	S · D	
200 XL	100	508.00	S · D	S
202 XL	101	513.08	S · D	
204 XL	102	518.16	S · D	
206 XL	103	523.24	S · D	
210 XL	105	533.40	S · D	S
212 XL	106	538.48	S · D	S
216 XL	108	548.64	S · D	
218 XL	109	553.72	S · D	
220 XL	110	558.80	S · D	S
224 XL	112	568.96		S
228 XL	114	579.12	S · D	
230 XL	115	584.20	S · D	S
234 XL	117	594.36	S · D	
236 XL	118	599.44	S · D	
240 XL	120	609.60	S · D	S
250 XL	125	635.00	S · D	S
254 XL	127	645.16	S · D	S
260 XL	130	660.40	S · D	S
270 XL	135	685.80	S · D	S
276 XL	138	701.04	S · D	
280 XL	140	711.20	S · D	
282 XL	141	716.28	S · D	
290 XL	145	736.60	S · D	S
300 XL	150	762.00	S · D	S
310 XL	155	787.40	S · D	
314 XL	157	797.56	S · D	
320 XL	160	812.80	S · D	S
330 XL	165	838.20	S · D	S
332 XL	166	843.28	S · D	
340 XL	170	863.60	S · D	S
348 XL	174	883.92	S · D	S
352 XL	176	894.08	S · D	S
360 XL	180	914.40	S · D	S

● S=Single-sided D=Double timing belt ● The design procedure and the defined drive capacity of single-sided timing belts are applied to the equivalent double-sided timing belts. ● Some sizes may not be in stock. Please contact us for the stock status before placing an order.

1
Properties



Classical Type (D)XL

Standard belt size table

Table 1-8

Nominal length	Number of teeth	Pitch length(mm)	Manufacturable Size	
			GB	U
364 XL	182	924.56	S · D	
370 XL	185	939.80	S · D	
376 XL	188	955.04	S · D	S
380 XL	190	965.20	S · D	
384 XL	192	975.36	S · D	S
388 XL	194	985.52	S · D	
390 XL	195	990.60	S · D	S
396 XL	198	1005.84	S · D	S
414 XL	207	1051.56	S · D	S
424 XL	212	1076.96	S · D	
430 XL	215	1092.20		S
450 XL	225	1143.00	S · D	
460 XL	230	1168.40	S · D	S
478 XL	239	1214.12	S · D	
480 XL	240	1219.20	S · D	S
490 XL	245	1244.60	S · D	S
512 XL	256	1300.48		S
522 XL	261	1325.88	S	
540 XL	270	1371.60	S	S
544 XL	272	1381.76		S
552 XL	276	1402.08	S	
564 XL	282	1432.56	S	S
592 XL	296	1503.68	S	
600 XL	300	1524.00	S	
616 XL	308	1564.64	S	
630 XL	315	1600.20	S	S
670 XL	335	1701.80	S	S
690 XL	345	1752.60	S	
730 XL	365	1854.20		S
754 XL	377	1915.16	S	
828 XL	414	2103.12	S	
842 XL	421	2138.68		S
860 XL	430	2184.40	S	

● S=Single-sided D=Double timing belt

● The design procedure and the defined drive capacity of single-sided timing belts are applied to the equivalent double-sided timing belts.

● Some sizes may not be in stock. Please contact us for the stock status before placing an order.

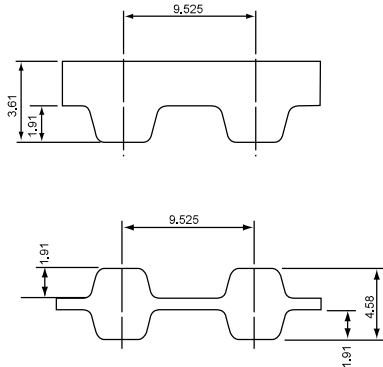
1

Properties



Classical Type (D)L

G Type (Rubber)



● Product Code

nominal width
(inch) × 100 = 1 inch (25.4 mm)

510

(D)L

100

G(U)

nominal length
(inch) × 10 = 51 inch (1295.40 mm)

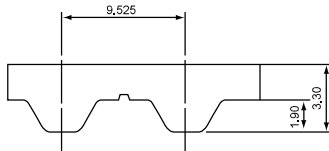
Tooth Profile
(DL for Double timing belt)

G Type (rubber) U Type (polyurethane)

Belt width lineup Table 1-9 **Belt weight per unit (kg/10mm x 1m)** Table 1-10

Nominal width	Width (mm)	Material	Tooth Profile	Belt weight
050	12.7	rubber	L	0.032
075	19.1		DL	0.033
100	25.4	polyurethane	L	0.030
150	38.1			

U Type (Polyurethane) *Single-sided only



Standard belt size table

Nominal length	Number of teeth	Pitch length(mm)	Manufacturable Size	
			G	U
109 L	29	276.23	S	
124 L	33	314.33	S	S
135 L	36	342.90	S	
150 L	40	381.00	S	S
165 L	44	419.10	S	S
173 L	46	438.15	S	S
180 L	48	457.20	S	
187 L	50	476.25	S · D	S
210 L	56	533.40	S · D	S
217 L	58	552.45	S · D	
225 L	60	571.50	S · D	S
232 L	62	590.55	S · D	
240 L	64	609.60	S · D	S
255 L	68	647.70	S · D	S
265 L	71	676.28	S · D	
270 L	72	685.80	S · D	S
277 L	74	704.85	S · D	
285 L	76	723.90	S · D	S
300 L	80	762.00	S · D	S
304 L	81	771.53		S
315 L	84	800.10	S · D	
320 L	85	809.63	S · D	
322 L	86	819.15	S · D	S
334 L	89	847.73	S · D	
337 L	90	857.25	S · D	
345 L	92	876.30	S · D	S
360 L	96	914.40	S · D	

Table 1-11

Nominal length	Number of teeth	Pitch length(mm)	Manufacturable Size	
			G	U
367 L	98	933.45	S · D	S
375 L	100	952.50	S · D	S
382 L	102	971.55	S · D	
390 L	104	990.60	S · D	S
394 L	105	1000.13	S · D	
398 L	106	1009.65	S · D	
420 L	112	1066.80	S · D	S
427 L	114	1085.85	S · D	S
435 L	116	1104.90	S · D	
450 L	120	1143.00	S · D	S
454 L	121	1152.53	S · D	
480 L	128	1219.20	S · D	S
510 L	136	1295.40	S · D	S
525 L	140	1333.50	S · D	S
540 L	144	1371.60	S · D	S
548 L	146	1390.65	S · D	
581 L	155	1476.38	S · D	
600 L	160	1524.00	S · D	S
630 L	168	1600.20	S · D	
653 L	174	1657.35	S · D	
660 L	176	1676.40	S	
697 L	186	1771.65	S	
731 L	195	1857.37	S	
934 L	249	2371.72	S	
1174 L	313	2981.33	S	
1264 L	337	3209.93	S	

● S=Single-sided D=Double timing belt

● The design procedure and the defined drive capacity of single-sided timing belts are applied to the equivalent double-sided timing belts.

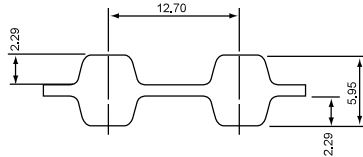
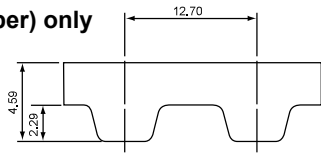
● Some sizes may not be in stock. Please contact us for the stock status before placing an order.

1
Properties



Classical Type (D)H

G Type (Rubber) only



● Product Code

nominal width
(inch) × 100 = 1 inch (25.4 mm)

510

(D)H

100

G

nominal length
(inch) × 10 = 51 inch (1295.40 mm)

Tooth Profile
(DH for Double timing belt)

G Type (rubber)

Belt width lineup Table 1-12

Belt weight per unit (kg/10mm x 1m) Table 1-13

Nominal width	Width (mm)
075	19.1
100	25.4
150	38.1
200	50.8
300	76.2

Material	Tooth Profile	Belt weight
rubber	H	0.040
	DH	0.043

Standard belt size table

Nominal length	Number of teeth	Pitch length(mm)	Manufacturable Size (G Type)
225 H	45	571.50	S
230 H	46	584.20	S
240 H	48	609.60	S · D
245 H	49	622.30	S · D
255 H	51	647.70	S · D
270 H	54	685.80	S · D
280 H	56	711.20	S · D
300 H	60	762.00	S · D
310 H	62	787.40	S · D
315 H	63	800.10	S · D
320 H	64	812.80	S · D
330 H	66	838.20	S · D
340 H	68	863.60	S · D
350 H	70	889.00	S · D
360 H	72	914.40	S · D
370 H	74	939.80	S · D
375 H	75	952.50	S · D
390 H	78	990.60	S · D
400 H	80	1016.00	S · D
410 H	82	1041.40	S · D
420 H	84	1066.80	S · D
430 H	86	1092.20	S · D
450 H	90	1143.00	S · D
465 H	93	1181.10	S · D
480 H	96	1219.20	S · D
490 H	98	1244.60	S · D
510 H	102	1295.40	S · D
530 H	106	1346.20	S · D
540 H	108	1371.60	S · D
560 H	112	1422.40	S · D
565 H	113	1435.10	S · D
570 H	114	1447.80	S · D
580 H	116	1473.20	S · D
600 H	120	1524.00	S · D
605 H	121	1536.70	S · D

Table 1-14

Nominal length	Number of teeth	Pitch length(mm)	Manufacturable Size (G Type)
625 H	125	1587.50	S · D
630 H	126	1600.20	S · D
640 H	128	1625.60	S · D
650 H	130	1651.00	S · D
660 H	132	1676.40	S · D
680 H	136	1727.20	S · D
700 H	140	1778.00	S · D
730 H	146	1854.20	S · D
750 H	150	1905.00	S · D
770 H	154	1955.80	S · D
800 H	160	2032.00	S · D
810 H	162	2057.40	S · D
840 H	168	2133.60	S · D
850 H	170	2159.00	S · D
860 H	172	2184.40	S · D
880 H	176	2235.20	S · D
900 H	180	2286.00	S · D
950 H	190	2413.00	S · D
1000 H	200	2540.00	S · D
1020 H	204	2590.80	S · D
1100 H	220	2794.00	S · D
1120 H	224	2844.80	S · D
1130 H	226	2870.20	S · D
1140 H	228	2895.60	S · D
1150 H	230	2921.00	S · D
1160 H	232	2946.40	S · D
1250 H	250	3175.00	S · D
1285 H	257	3263.90	S · D
1325 H	265	3365.50	S · D
1345 H	269	3416.30	S · D
1350 H	270	3429.00	S · D
1360 H	272	3454.40	S · D
1400 H	280	3556.00	S · D
1700 H	340	4318.00	S · D
1765 H	353	4483.10	S · D

● S=Single-sided D=Double timing belt

● The design procedure and the defined drive capacity of single-sided timing belts are applied to the equivalent double-sided timing belts.

● Some sizes may not be in stock. Please contact us for the stock status before placing an order.

1
Properties